

LARSEN YAGI ANTENNAS

Larsen Yagi directional antennas are designed with strengthened aluminum alloys to assure long life and best performance for the most demanding applications. Units are completely weatherized for continuous operation in the most extreme weather conditions. Solid aluminum elements provide superior signal radiation and broad bandwidth capabilities. Convenient "U" bolt mounting makes installation easy. All Larsen Yagis come with the Pulse Two Year No-Nonsense warranty.

Larsen Yagis are available in the following configurations:

Welded Yagis:

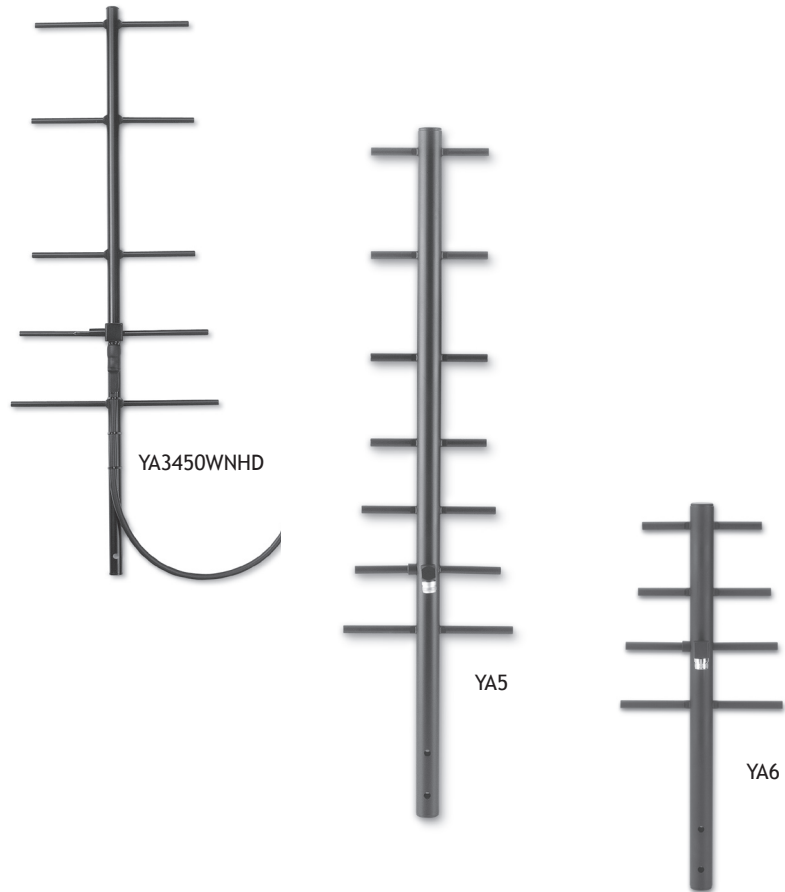
Superior performance from fully welded construction. The ideal antenna for the most extreme environments.

YA3 "W"

- Frequencies from 406-470 MHz
- 5 elements
- 11 dBi gain

YA5 & 6 "W"

- Frequencies from 740-960 MHz
- 4 elements (YA6), 7 elements (YA5)
- 8 dBi and 11 dBi gain



In a continuing effort to provide high quality antennas, Larsen is pleased to announce all our Yagis now use the rugged, fully welded design. Our Yagi line includes the YA5 and YA6 SMR, cellular or data antennas. The four-element unit delivers 8 dBi of gain and the seven-element delivers 11 dBi. Both units are built with a special N-Female connector that enables extra clearance for ease of weatherproofing.

The YA3450WNHD features durable strengthened aluminum alloy construction, solid 3/8" welded elements, wider hole pattern spacing allowing heavier bracketry, and a pre-weatherized pigtail to provide superior performance in the most demanding conditions.

LARSEN YAGI ANTENNAS

MODEL	FREQUENCY	CONNECTOR
YA3406WN	406 - 430 MHz	N Female
YA3450WN	450 - 470 MHz	N Female
YA3470WN	470 - 490 MHz	N Female
YA3490WN	490 - 512 MHz	N Female
YA3406WPL	406 - 430 MHz	UHF Female
YA3450WPL	450 - 470 MHz	UHF Female

SPECIFICATIONS

GAIN	9 dBd / 11 dBi
TYPE	Five element welded
VSWR	1.5:1 maximum
POWER RATING	300 Watts
MAX LENGTH	42.25"- 406 MHz 36.25"- 450 MHz 35.25"- 470 MHz 34.25"- 490 MHz
VERTICAL BEAMWIDTH	53°
WIND LOAD	100 mph

MODEL	FREQUENCY	CONNECTOR
YA5740W	740 - 806 MHz	N Female
YA5800W	806 - 866 MHz	N Female
YA5825W	824 - 896 MHz	N Female
YA5900W	890 - 960 MHz	N Female

SPECIFICATIONS

GAIN	9 dBd / 11 dBi
TYPE	Seven element welded
VSWR	2.0:1 maximum
POWER RATING	300 watts
MAX LENGTH	32.75"
VERTICAL BEAMWIDTH	45°
WIND LOAD	100 mph

MODEL	FREQUENCY	CONNECTOR
YA51400W	1395 - 1450 MHz	N Female

SPECIFICATIONS

GAIN	10 dBi
TYPE	Seven element welded
VSWR	2:1 maximum
POWER RATING	300 watts
MAX LENGTH	23.5"
VERTICAL BEAMWIDTH	54°
WIND LOAD	100 mph

MODEL	FREQUENCY	CONNECTOR
YA6740W	740 - 806 MHz	N Female
YA6800W	806 - 866 MHz	N Female
YA6825W	824 - 896 MHz	N Female
YA6900W	890 - 960 MHz	N Female

SPECIFICATIONS

GAIN	6 dBd / 8 dBi
TYPE	Four element welded
VSWR	2.0:1 maximum
POWER RATING	300 watts
MAX LENGTH	17.5"
FEED CONNECTION	N Female
VERTICAL BEAMWIDTH	58°
WIND LOAD	100 mph