

# WHAT'S NEW

## GPS Antennas

Larsen's selection of GPS antennas continues to grow with the introduction of the GPSPMM series. The GPSPMM is a magnetic mount tri-band antenna ideal for use on vehicles requiring a low profile multi-band antenna without drilling a hole in the vehicle - the cable is routed out the side of the antenna rather than the bottom.

See Page 124.

- **GPSPMM**      **Magnetic Mount Tri-band**  
Frequency: 824-960/1710-2170/1575 MHz,  
Gain: 2 dBi / 2 dBi / 5 dBi,  
Dimensions: 7.5" L x 3.5" W x 1.25" D  
Cable: 16' RG-174

Connector options:

Part Number	Connector
GPSPMM00	TNC/SMA
GPSPMM02	NoConn/SMA
GPSPMM12	TNC/TNC



## Pentaband Antennas

Larsen adds to our selection of pentaband antennas with two new products: the R0806/2170TNCWA and the LP806/2170TNC. These antennas combine 4-band GSM and W-CDMA 2100 to receive and transmit signals in all cellular bands. They can be used in applications for devices operating on GSM bands (GSM850, EGSM900, PCN1800, PCS1900) and W-CDMA 2100. See Pages 138, 143.

- **R0806/2170TNCWA**      **Radome Omni**  
Frequency: 806-960/1710-2170 MHz  
Gain: 4 dBi  
Max Height: 16"  
Connector: TNC (Male)
- **LP806/2170TNC**      **Low Profile**  
Frequency: 806-960/1710-2170 MHz  
Gain: 0 dBi / 1.5 dBi  
Dimensions: 2" high X 5.75" diameter  
Cable: 15' LMR-195  
Connector: TNC (Male)



R0806/2170TNC

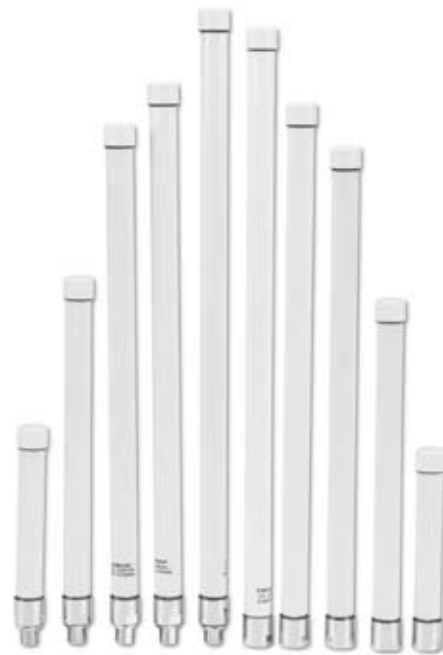


LP806/2170TNC

## Radome Omni Antennas

In a continuing effort to provide rugged outdoor antennas, Larsen has redesigned our current line of Radome Omnis for harsher outdoor environments. The change in design results in a 20% increase in both environmental and mechanical stability. The upper end of the operating temperature range has increased from 131° F to 149° F while the structural loading has gone from 100 mph to 150 mph. These changes result in a more durable product.

Radome omnis are available in several frequency ranges from 2.4 to 5.9 GHz with gains from 6 to 10 dBi. Most radomes are available with either an N Male or N Female connector. See Pages 131-133.



Part numbers for the radome omni series have been updated to conform to the Larsen part numbering system. For your convenience, a cross reference of our old part numbers to the new part number is provided below.

Old Part Number	New Part Number	Frequency (GHz)	Gain (dBi)	Connector
R380.500.219	RO2406NF	2.4 - 2.5	6	N Female
R380.500.228	RO2406NM	2.4 - 2.5	6	N Male
R680.600.201	RO5206NF	5.2 - 5.4	6	N Female
R380.700.206	RO5806NF	5.7 - 5.9	6	N Female
R380.500.220	RO2408NF	2.4 - 2.5	8	N Female
R380.500.226	RO2408NM	2.4 - 2.5	8	N Male
RO2404NM	No change	2.4 - 2.5	4	N Male
RO2474NM	No change	2.4 - 2.5	7.4	N Male
RO5410NM	No change	5.4 - 5.8	10	N Male
R380.500.223	RO4910NF	4.9 - 5.0	10	N Female
R380.500.227	RO4910NM	4.9 - 5.0	10	N Male
R380.700.212	RO5810NM	5.7 - 5.9	10	N Male
R380.600.200	RO5210NF	5.2 - 5.4	10	N Female
R380.600.204	RO5210NM	5.2 - 5.4	10	N Male
R380.700.205	RO5810NF	2.7 - 5.9	10	N Female

