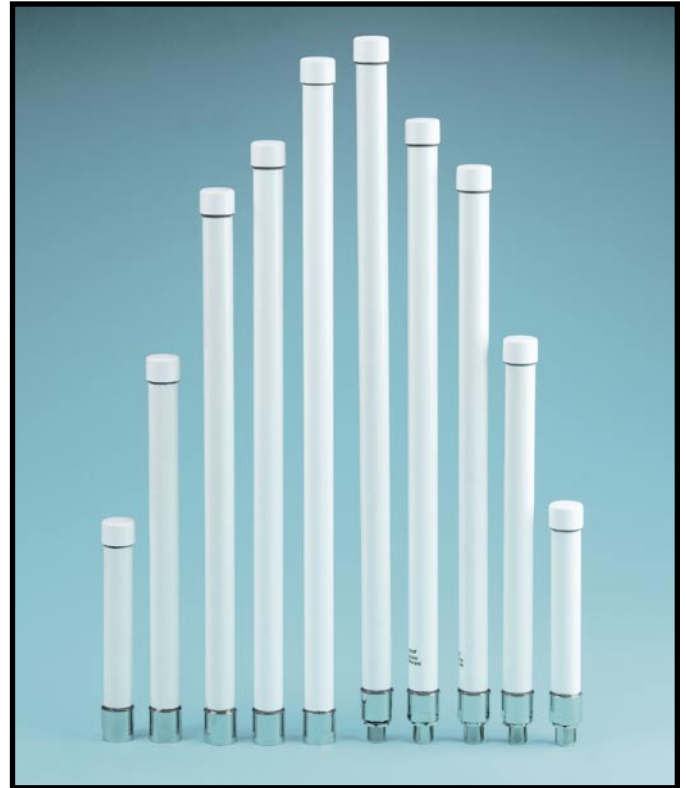


# LARSEN RADOME OMNI ANTENNAS

In a continuing effort to provide rugged outdoor antennas, Larsen has redesigned our current line of Radome Omnis for harsher outdoor environments. The change in design results in a 20% increase in both environmental and mechanical stability. The upper end of the operating temperature range has increased from 131° F to 149° F while the structural loading has increased from 100 mph to 150 mph. These changes result in a more durable product.

All Larsen Radome Omnis have a VSWR of 2:1 and a power rating of 20 Watts. Radomes are made of Pultruded Fiberglass (UV-protected).

Larsen Radome Omnis come in a variety of frequencies including 2.4, 4.9, 5.2, 5.4 and 5.8 GHz and a penta-band version covering 806-960/1710-2170 MHz. Gains range from 4 dBi to 10 dBi. Most models are available with either an N Male or N Female connector. Downtilt options are also available (contact the factory for more information).



MODEL	FREQUENCY (MHz)	GAIN (dBi)	HEIGHT (Inches)	CONNECTOR
<b>Single Band</b>				
RO2404NM	2400 - 2485	4	11.5	N Male
RO2406NF	2400 - 2500	6	11.5	N Female
RO2406NM	2400 - 2500	6	11.5	N Male
RO2408NF	2400 - 2500	8	20	N Female
RO2408NM	2400 - 2500	8	20	N Male
RO2474NM	2400 - 2485	7.4	16.5	N Male
RO4910NF	4940 - 4990	10	18	N Female
RO4910NM	4940 - 4990	10	18	N Male
RO5206NF	5150 - 5350	6	6.75	N Female
RO5210NF	5150 - 5350	10	16.5	N Female
RO5210NM	5150 - 5350	10	16.5	N Male
RO5410NM	5470 - 5725	10	16.5	N Male
RO5806NF	5725 - 5875	6	6.75	N Female
RO5810NF	5725 - 5875	10	16.5	N Female
RO5810NM	5725 - 5875	10	16.5	N Male
<b>Multi Band</b>				
R0806/2170TNCWA	806-960 / 1710-2170	4	16.5"	TNC Male