

LARSEN PENTABAND ANTENNAS

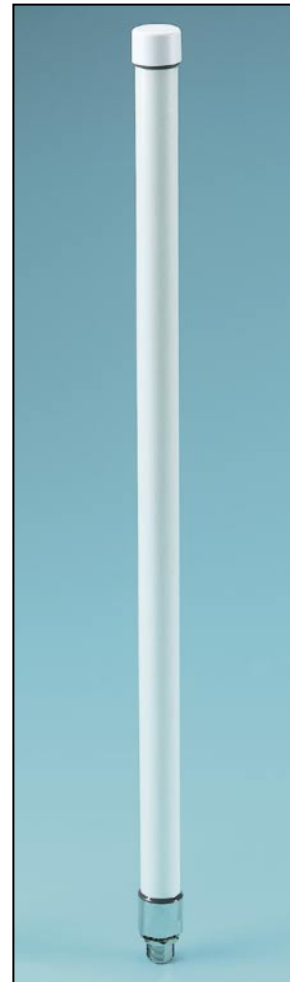
Larsen offers a line of products which combine 4-band GSM and W-CDMA 2100 to receive and transmit signals in all cellular bands. Larsen pentaband antennas cover 806-960/1710-2170 MHz.

The OC806/2170TNCLAR is an omni directional ceiling mount with a gain of 1.5 dBi/2.5 dBi and a TNC connector. The LP806/2170TNCLAR is a low profile direct mount antenna with 15' of coax.

The SPDA17806/2170LAR is a swivel mount dipole with a TNC Male connector and a gain of .5 in both frequency bands. The RO806/2170TNCWA is constructed of Pultruded Fiberglass designed for use indoors or out.

Larsen pentaband antennas feature a unique multiband design which allows a wide range of frequencies to be covered by one small antenna. Created primarily for office environments, these antennas are also ideally suited for parking garages, airports, shopping malls and other challenging coverage areas.

Designed for simple installation and minimal visual impact, these antennas support both existing and future wireless applications.



LARSEN PENTABAND ANTENNAS

MODEL	FREQUENCY (MHz)
OC806/2170TNCLAR	806 - 960 / 1710 - 2170

SPECIFICATIONS	
GAIN	1.5 dBi / 2.5 dBi
TYPE	Ceiling Mount
VSWR	1.8:1 / 1.6:1 maximum
IMPEDANCE	50 Ohms
POLARIZATION	Vertical
RADIATION PATTERN	E Plane (806-960): 115° E Plane (1710-2170): 55° H Plane: Omni
MAX INPUT POWER	50 Watts
OPERATING TEMP	-22° to +158°
RADOME ENCLOSURE	ABS (UL 94 V0)
COAX	8" RG-405 (blue)
CONNECTOR	TNC (Male)
DIMENSIONS	2.75" H x 7" Diameter
MOUNTING	Direct Feed

MODEL	FREQUENCY (MHz)
SPDA17806/2170LAR	806 - 960 / 1710 - 2170

SPECIFICATIONS	
GAIN	.5 dBi
TYPE	Swivel Mount Dipole
VSWR	2.5:1
IMPEDANCE	50 Ohms
POLARIZATION	Vertical
RADIATION PATTERN	E Plane (849): 88° E Plane (960): 58° E Plane (1747): 80° E Plane (1850): 48° E Plane (1950): 45° E Plane (2140): 55° H Plane: Omni
MAX INPUT POWER	25 Watts
OPERATING TEMP	-22° to +158° F
RADOME ENCLOSURE	PC / ABS (UL 94 V0)
COAX	Order separately
CONNECTOR	TNC (Male)
DIMENSIONS	Bent: 6" H X 1.5" W Straight: 7.5" H X .6" W

MODEL	FREQUENCY (MHz)
LP806/2170TNCLAR	806 - 960 / 1710 - 2170

SPECIFICATIONS	
GAIN	0 dBi / 1.5 dBi
TYPE	Low profile direct mount
VSWR	2.5:1
IMPEDANCE	50 Ohms
POLARIZATION	Vertical
RADIATION PATTERN	E Plane (806-960): 64° E Plane (1710-2170): 90° H Plane: Omni
MAX INPUT POWER	20 Watts
OPERATING TEMP	-40° to +185°
RADOME ENCLOSURE	ABS (UL 94 V0)
COAX	15' LMR-195
CONNECTOR	TNC (Male)
DIMENSIONS	2" H x 5.5" Diameter
MOUNTING	Direct Feed

MODEL	FREQUENCY (MHz)
RO806/2170TNCWA	806 - 960 / 1710 - 2170

SPECIFICATIONS	
GAIN	4 dBi
TYPE	Radome Omni
VSWR	2.5:1
IMPEDANCE	50 Ohms
POLARIZATION	Vertical
RADIATION PATTERN	E Plane (806-960): 40° E Plane (1710-2170): 30° H Plane: Omni
MAX INPUT POWER	20 Watts
OPERATING TEMP	-40° to +185°
RADOME ENCLOSURE	ABS
INGRESS PROTECTION	IP67
COAX	Order Separately
CONNECTOR	TNC (Male)
HEIGHT	16"